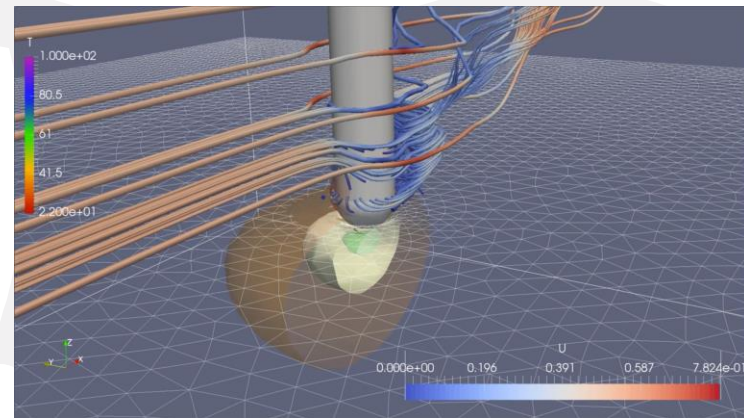


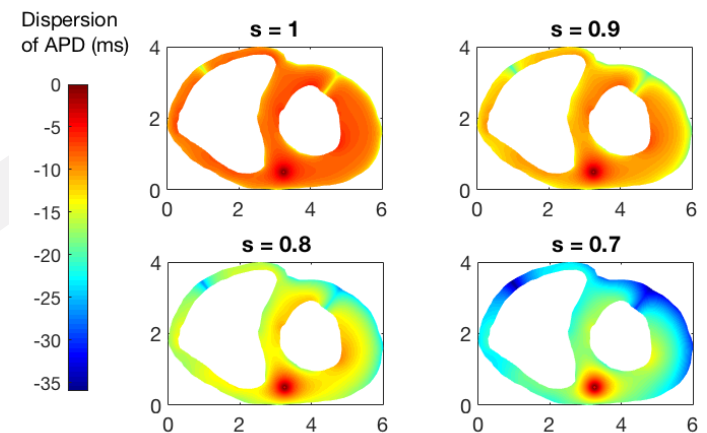
BCAM: Mathematical Modeling in Bioscience Group (MMB).

Model development and numerical simulation

- Computational modeling of RadioFrequency ablation: detailed study of lesion formation taking into account characteristics of tissue, pressure, and electrode
- Fractional Monodomain in electrophysiology: use of space-fractional modeling to take into account at once tissue anisotropy and heterogeneity
- Coupling of electro-metabolic activity.



Lesion formation during RF ablation



AP dispersion for different levels of tissue heterogeneity